

Remote User Card

The AVL will use the personal information collected during AVL card registration only to authenticate users for AVL access and to provide updates on the AVL and its databases to registered home users. The personal information collected will not be released, sold or used for other purposes.

AVL databases accessed via the AVL remote access card are for personal use only. The databases are licensed for use only by Alabama citizens. Please make full use of these databases, but keep your personal password secure and private. Use of the AVL by unauthorized users outside of Alabama will jeopardize use of the databases by all Alabama citizens.

An AVL user may not sell, distribute or commercially exploit a product nor make an AVL database available on a network or through remote access technology. Misuse of services provided by AVL may result in denial of service.

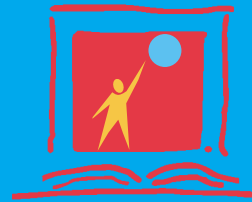


Alabama Virtual Library

Partners in Excellence

Cooperation among these five state agencies has made the AVL vision a reality:

- Alabama Commission on Higher Education
- Alabama Department of Education
- Alabama Department of Postsecondary Education
- Alabama Public Library Service
- Alabama Supercomputer Authority



~Alabama's premiere online information resource~



<http://www.avl.lib.al.us>

The Alabama Virtual Library is supported by the Governor and the Alabama Legislature and funded by Alabama taxpayers.

Frequently Asked Questions About the Alabama Virtual Library

How do I access the AVL from home?

Visit your public or school library and request an AVL remote access card. This card will allow users to access the AVL resources from home, office or other remote locations. There is no fee charged for this service. AVL resources are provided to all Alabama citizens through funding from their tax dollars.

How do I access the AVL from a school or public library?

Computers in these facilities are authenticated for use without having to use an AVL remote access card or an individual password. Just type in the AVL web address and go!

What is the AVL web address for remote access users?

After obtaining an AVL card from their school or public library, users can access AVL resources at <http://www.avl.lib.al.us>. Click on the HOME ACCESS button and enter your individual user name and password found on the back of your card.

What is the AVL web address for school or public library users?

School and public library users can access AVL resources at <http://www.avl.lib.al.us>. Click on the CAMPUS & LIBRARY button and access AVL resources immediately. No password or card is necessary.

Can my family share one AVL remote access card?

Since each person is issued a unique password when he obtains a card, sharing a card is not recommended. When cards are shared by family members, multiple log-ins are not allowed. Access to more than one family member at a time is denied.

Can I change my password? When does it expire?

Passwords cannot be changed. User passwords expire in three years from the date of card issue. Thirty (30) days before the AVL card expires, an expiration message will appear on screen when you log in to the AVL. Contact the issuing library found on the back of the card to renew your password.

Is there a time limit on my access once I login to the AVL?

AVL sessions are set to expire two hours after the last recorded AVL activity. To continue, a user must exit and log in again.

How can I learn about the databases in the AVL?

Searching tips and database information are available through help screens and tutorials once users log in. These aids are easy to understand and use.

How do I get help if I need it?

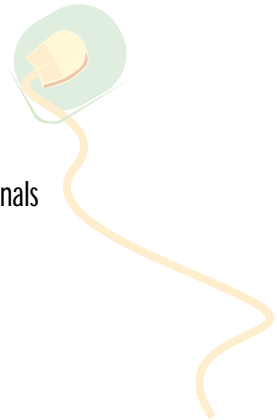
Contact your issuing library to request assistance if you are using a remote access card, or your librarian if you are in a school or public library. The library may forward problems to the AVL help desk if problems persist.



Quality Information
at the click of a mouse!



- Magazines
- Newspapers
- Encyclopedias
- Dictionaries
- Almanacs
- Academic Journals
- Poetry
- Literature
- Health
- Law
- Science
- Stories



AVL User Requirements:

- Home User:
Computer with Internet Access
and AVL remote access card
- Campus & Library User:
Computer with Internet Access
in a school or library
- Browser
Internet Explorer
(4.0 or higher)
Netscape Navigator
(4.0 or higher)
- General knowledge of the
web and simple searching
techniques

